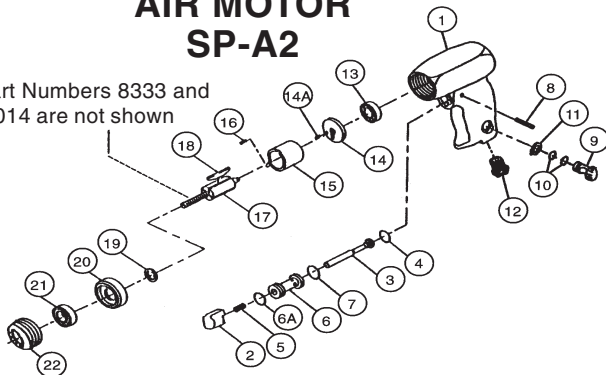




## AIR MOTOR SP-A2

NOTE: Part Numbers 8333 and 9014 are not shown



ITEM NUMBER	DESCRIPTION	PART NUMBER
1	Motor housing	S317-40
	<b>Trigger assembly repair kit (includes items 2-8)</b>	<b>S317-00</b>
2	Trigger	S317-93
3	Throttle valve assembly	S317-A302
4	Throttle valve seal	S317-103
5	Throttle valve spring	S317-51
6	Throttle valve body assembly	S317-A503
6A	Valve body seal	S7802-291
7	Valve body seal	S7802-291
8	Valve body retaining pin	S317-120
	<b>Speed regulator repair kit (includes items 9-12)</b>	<b>S317-01</b>
9	Speed regulator assembly	S317-A249
10	Regulator seal (2 req'd)	S310-169
11	Regulator retainer	S317-118
12	Inlet bushing	S317-38
13	Rear impeller bearing	S222-22
	<b>Rear impeller repair kit (includes items 14 &amp; 14A)</b>	<b>S317-02</b>
14	Rear end plate assembly	S317-A12
14A	Dowel (end plate)	S308-98
	<b>Cylinder repair kit (includes items 15 &amp; 16)</b>	<b>S317-03</b>
15	Cylinder assembly	S317-A3
16	Dowel (cylinder)	S308-98
17	Impeller	S317-53
18	Vane packet (4)	S317-42-4
19	Impeller spacer	S317-65
20	Front end plate	S317-11
21	Front impeller bearing	S317-22
22	Motor locknut	S317-27
23	Muffler (not shown)	SAF350
24	Motor coupling (not shown)	8333
25	A2 adapter (not shown)	9014

**Read and understand operating and safety instructions before  
operating any Standard Pump.**