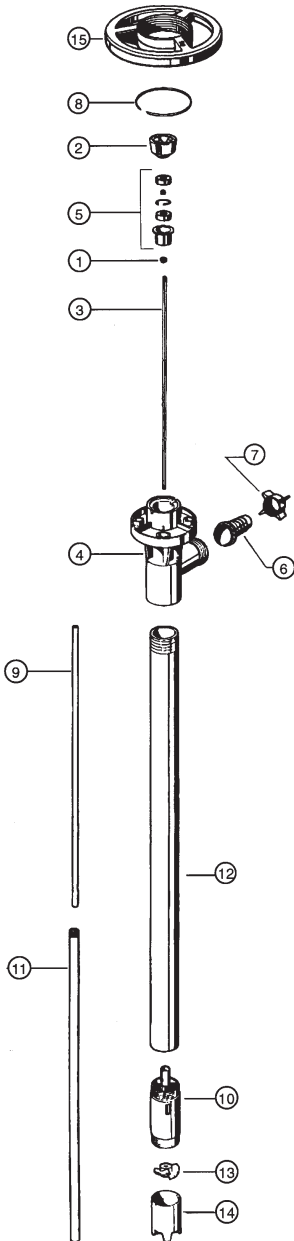




CPVC PUMP TUBE SP-CPVC SERIES



ITEM NO.	DESCRIPTION	PART NUMBER
1	V-seal - TFE	4000
2*	Pump coupling	1004
3	Drive shaft	27" (700 mm) 1543 39" (1000 mm) 1544 47" (1200 mm) 1545 60" (1400 mm) 1546 72" (1800 mm) 1547
4	Discharge housing	5028
5*	Bearing unit assembled - 2 each Viton shielded bearings, spacer, snap ring, bearing can	1038
6	Hose barb,	3/4" (22 mm) 5051 1" (25 mm) 5082
7	Wing nut	5106
8*	Snap ring	1508
9	Guide sleeve - TFE	27", 39", 47" 1514 60", 72" 1661
10	Pump housing includes carbon bushing	5524
11	Inner tube,	27" (700 mm) 5600 39" (1000 mm) 5601 47" (1200 mm) 5602 60" (1400 mm) 5615 72" (1800 mm) 5616
12	Outer tube,	27" (700 mm) 5604 39" (1000 mm) 5603 47" (1200 mm) 5605 60" (1400 mm) 5617 72" (1800 mm) 5618
13	Impeller High pressure impeller	5608 4608 HH
14	Pump foot High pressure pump foot	5609 5609 HH
15*	Hand wheel	1842

* Parts interchange with all pump tubes.



CPVC pumps should not be used to pump flammables.