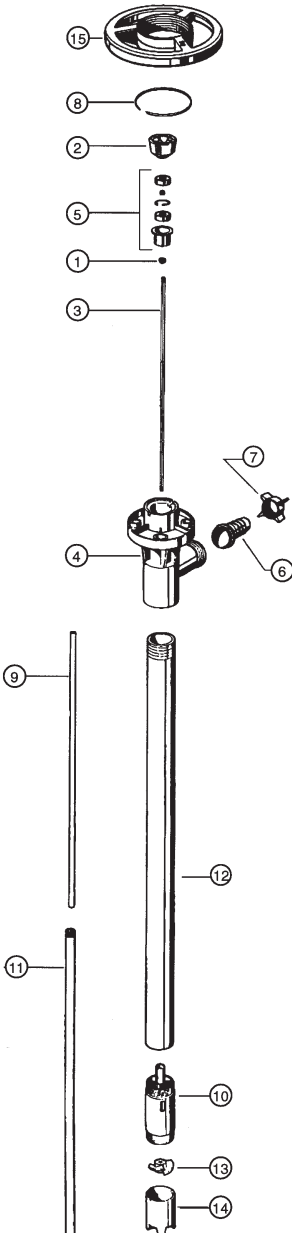




POLYPROPYLENE PUMP TUBE SP-PP SERIES



| ITEM NO. | DESCRIPTION | PART NUMBER |
|----------|---|-----------------|
| 1 | V-seal - Viton | 1000 |
| 2* | Pump coupling | 1004 |
| 3 | Drive shaft, 27" (700 mm) | 1005 |
| | 39" (1000 mm) | 1006 |
| | 47" (1200 mm) | 1007 |
| | 60" (1400 mm) | 1611 |
| | 72" (1800 mm) | 1612 |
| 4 | Discharge housing | 1028 |
| 5* | Bearing unit assembled - 2 each Viton shielded bearings, spacer, snap ring, bearing can | 1038 |
| 6 | Hose barb, 3/4" (22 mm) | 1051 |
| | 1" (25 mm) | 1082 |
| 7 | Wing nut | 1106 |
| 8* | Snap ring | 1508 |
| 9 | Guide sleeve - TFE | |
| | 27", 39", 47" | 1514 |
| | 60", 72" | 1661 |
| 10 | Pump housing includes carbon bushing | 1524 |
| 11 | Inner tube, 27" (700 mm) | 1600 |
| | 39" (1000 mm) | 1601 |
| | 47" (1200 mm) | 1602 |
| | 60" (1400 mm) | 1615 |
| | 72" (1800 mm) | 1616 |
| 12 | Outer tube, 27" (700 mm) | 1604 |
| | 39" (1000 mm) | 1603 |
| | 47" (1200 mm) | 1605 |
| | 60" (1400 mm) | 1617 |
| | 72" (1800 mm) | 1618 |
| 13 | Impeller High pressure impeller | 1608 4608 HH |
| 14 | Pump foot High pressure pump foot | 1609 1609 HH |
| 15* | Hand wheel | 1842 |

* Parts interchange with all pump tubes.



**Polypropylene pumps should
not be used to pump flammables.**