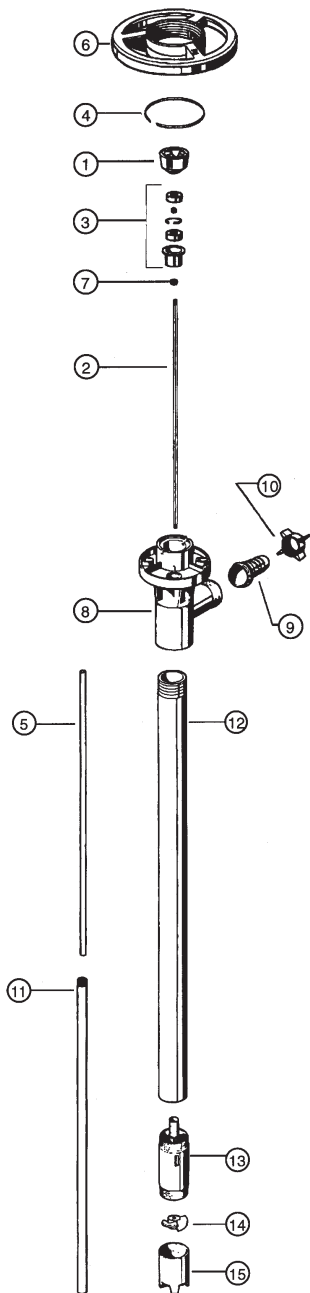




PVDF PUMP TUBE SP-PVDF SERIES



ITEM NO.	DESCRIPTION	PART NUMBER
1*	Pump coupling	1004
2	Drive shaft 27" (700 mm) 39" (1000 mm) 47" (1200 mm)	1543 1544 1545
3*	Bearing unit assembled - 2 each Viton shielded bearings, spacer, snap ring, bearing can	1038
4*	Snap ring	1508
5	Guide sleeve - TFE 27", 39", 47"	1514
6*	Hand wheel	1842
7	V-seal - TFE	4000
8	Discharge housing	4028
9	Hose barb, 3/4" (22 mm) 1" (25 mm)	4051 4082
10	Wing nut	4106
11	Inner tube, 27" (700 mm) 39" (1000 mm) 47" (1200 mm)	4600 4601 4602
12	Outer tube, 27" (700 mm) 39" (1000 mm) 47" (1200 mm)	4604 4603 4605
13	Pump housing includes carbon bushing	4607
14	Impeller - PVDF High pressure rotor	4608 4608HH
15	Pump foot High pressure pump foot	4609 4609HH

* Parts interchange with all pump tubes.



**PVDF pumps should not
be used to pump flammables.**