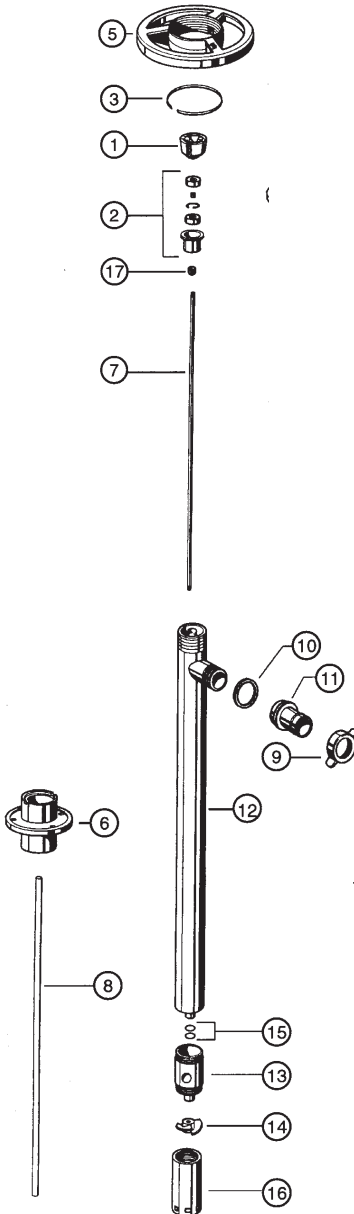




# 316 STAINLESS STEEL PUMP TUBE SP-SS SERIES



ITEM NO.	DESCRIPTION	PART NUMBER
1*	Pump coupling	1004
2*	Bearing unit assembled — 2 each Viton shielded bearings, spacer, snap ring, bearing can	1038
3*	Snap ring	1508
5*	Hand wheel	1842
6	Connection flange	2000
7	Drive shaft	27" (700 mm) 2027 39" (1000 mm) 2028 47" (1200 mm) 2029 60" (1400 mm) 2709 72" (1800 mm) 2710
8	TFE guide sleeve	27" (700 mm) 2031 39" (1000 mm) / 47" (1200 mm) 2032 60" (1400 mm) 2711 72" (1800 mm) 2712
9	Wing nut	2068
10	TFE seal	2195
11	Hose barb, 1" (25 mm)	2196
12	Inner/outer tube assembly	27" (700 mm) 2700 39" (1000 mm) 2701 47" (1200 mm) 2702 60" (1400 mm) 2713 72" (1800 mm) 2714
13	Pump housing with carbon bushing	2704
14	TFE impeller High pressure impeller	2706 4608 HH
15	'O'-ring, Viton, 2 per set	2707
16	Pump foot High pressure pump foot	2708 2708 HH
17	V-Seal - TFE	4000

\* Parts interchange with all pump tubes.

**Read and understand operating and safety  
instructions before operating  
any Standard Pump.**